

Tikrit University

College of Nursing

Basic Nursing Sciences



First Year - 2023-2024

Anatomy

First stage

(عنوان المحاضرة)

Digestive system

by:

Asst. Lecturer:

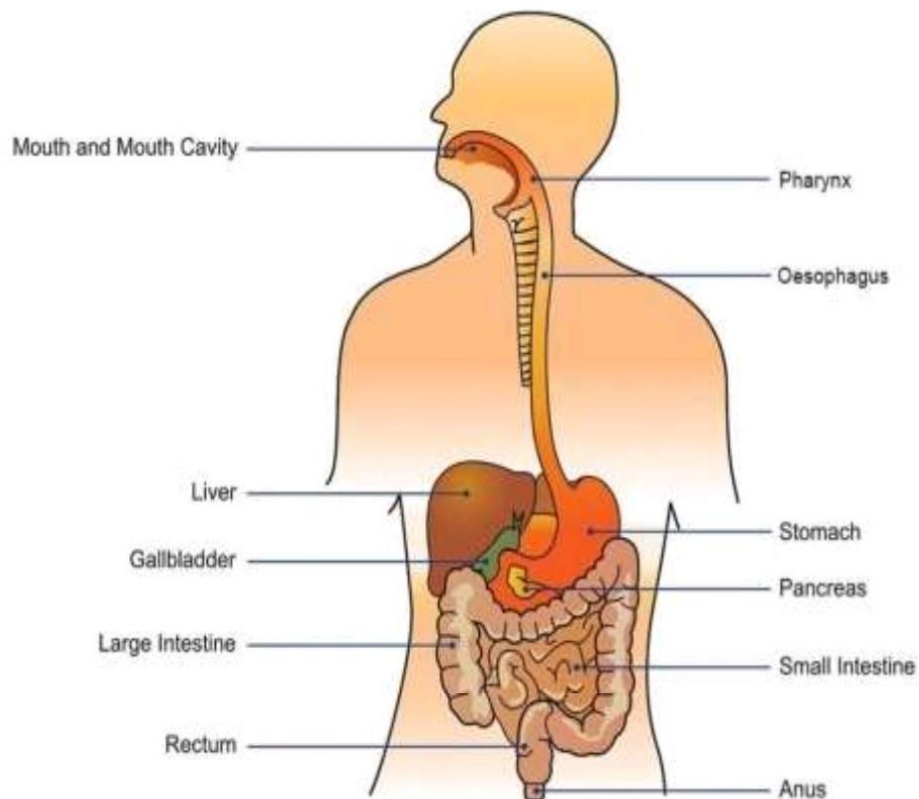
Saif Mohammed Fanar

Digestive system :

Gastrointestinal tract (GIT) :

Digestive system is a long tube extending from the mouth to the anus. It consist of :

1. Mouth.
2. Pharynx.
3. Esophagus.
4. Stomach.
5. Small intestine.
6. Large intestine .
7. Anus.



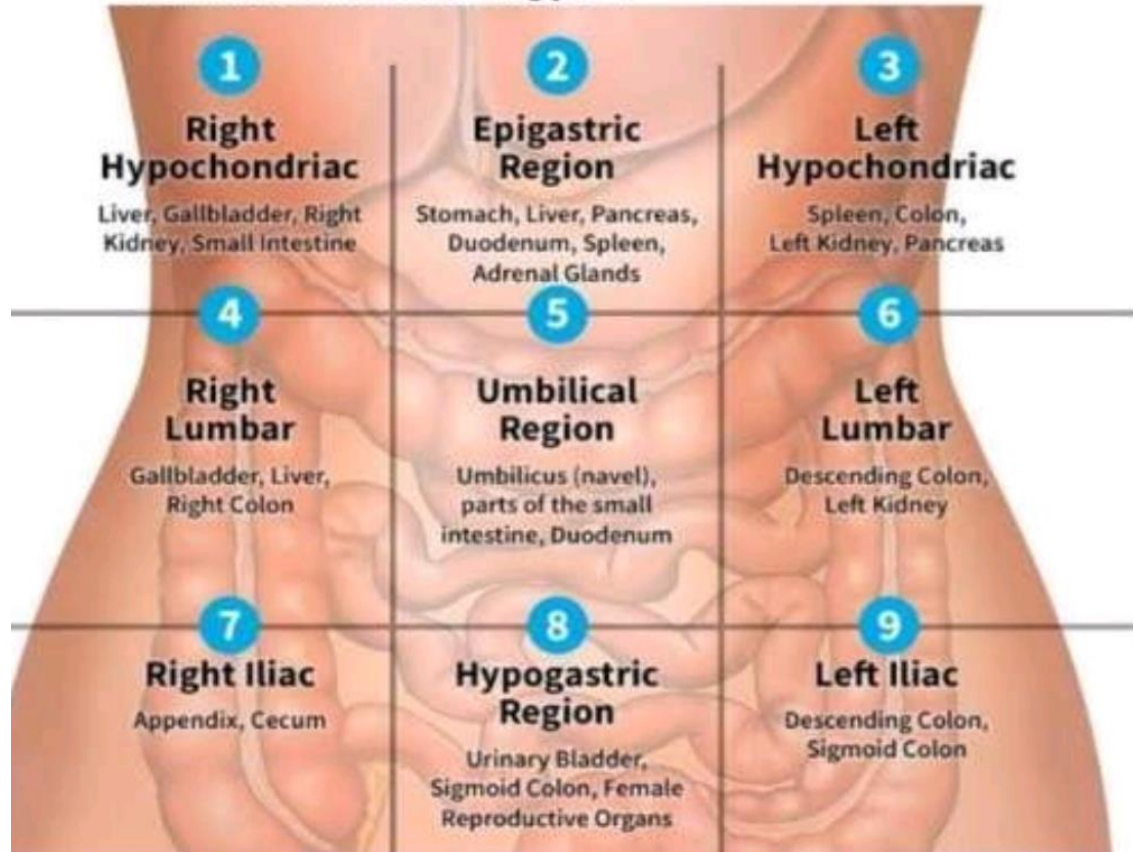
Digestion takes place in the alimentary canal and is aided by the accessory organs of digestion which is :

1. Salivary gland.
2. Liver.
3. Pancreas.

The abdomen can be divided into nine regions by imaginary line

1. Epigastrium.
2. Right hypochondrium.
3. Left hypochondrium.
4. Umbilical.
5. Left lumbar.
6. Right lumbar.
7. Hypogastrium.
8. Left iliac fossa .
9. Right iliac fossa.

-The stomach consist of following parts :



The mouth contain:

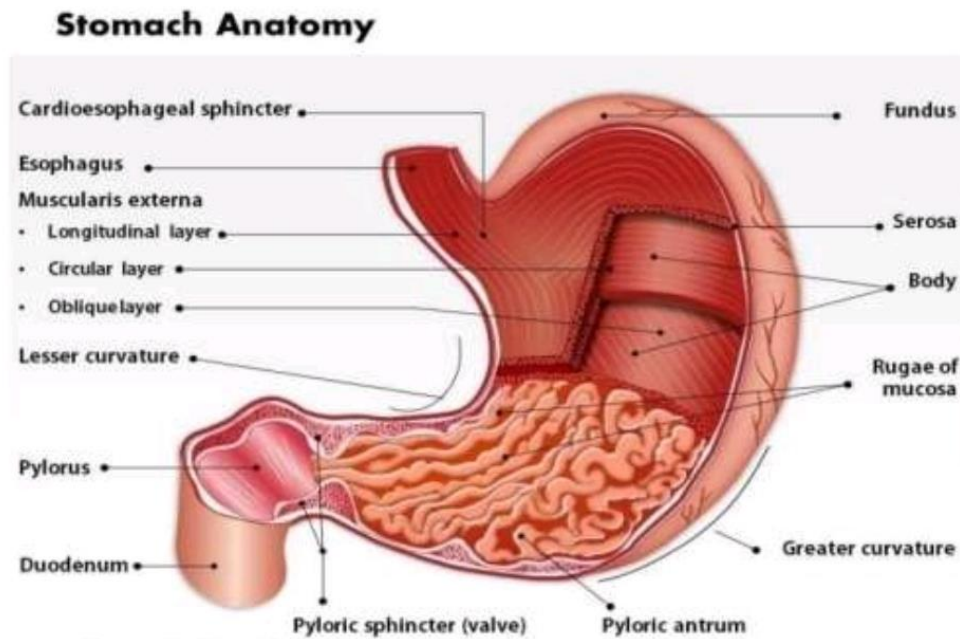
1. The tongue.
2. Teeth.
3. Salivary glands : It's compose of locations
 - Parotid gland.
 - Sublingual gland.
 - Submandibular gland.

Esophagus : is a muscular tube extending from the pharynx to the stomach it about (25) cm in length.

The stomach : is a dilated portion of alimentary canal. It is situated between the esophagus and the small intestine.

1. fundus.

2. body.
3. Antrum.
4. Pylorus.



The small intestine :

Is a convoluted tube extending from the pylorus of the stomach to the large intestine. It is about 5 M long and consist of three parts:

1. Duodenum.
2. Jejunum.
3. Ileum.

Large intestine or colon :

It is about 1.5 M long extending from the end of ileum to the anus it consist of following parts:

1. Cecum and appendix.
2. Ascending colon.
3. Transverse colon.

4. Descending colon.
5. Pelvic or sigmoid colon.
6. Rectum.
7. Anus.

