

Tikrit University

College of Nursing

Basic Nursing Sciences



First Year - 2023-2024

English

(Title: Anatomical Position part11)

by: Prof.Dr. Abdul-Jabbar Al-Samarrae

❖ Anatomical Planes

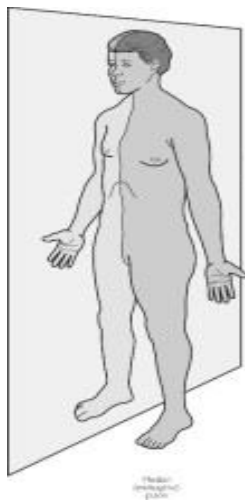
A. Transverse Plane

- ❖ it divides the body into upper and lower parts



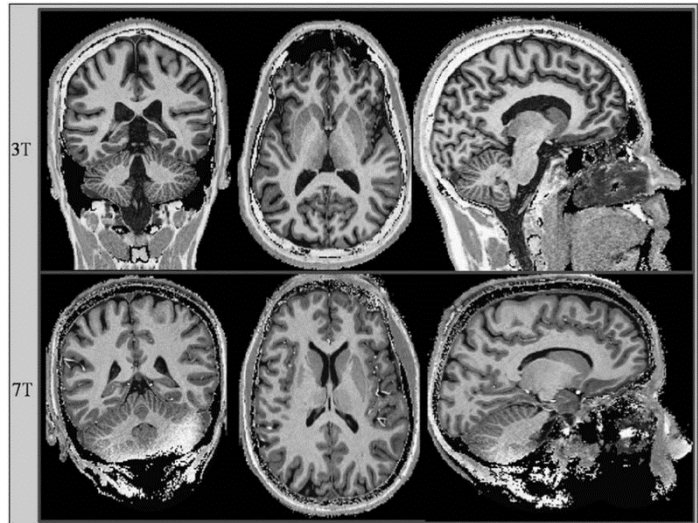
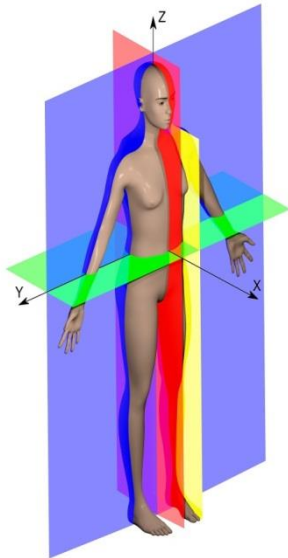
B. Vertical plane

- mid sagittal plane (median plan);
 - is a vertical plane passes through the middle of body,
 - it divides the body into equal right and left halves



- **parasagittal plane**

- ❖ parallel to sagittal plane,
- ❖ it divides the body into unequal right and left halves



- **Coronal Plane;**

- is A vertical plane running from side to side
- it divides the body into anterior and posterior parts



Anatomical terms of position

1. **Anterior (ventral)**; it means nearer to the **front** of the body
2. **Posterior (dorsal)**; it means nearer to the **back** of the body
3. **Superior (cranial)**; it means nearer to the **head**
4. **inferior (caudal)**. it means. any nearer to the **feet**
5. **Superficial** .it means **nearer to** the skin
6. **Deep**.it means **faraway** from skin
7. **Medial**.it means **nearer** to the middle line
8. **Lateral** .it means away **from** middle line
9. **proximal**: it means **nearer** to the point of origin.
10. **distal**: it means **far away** from the point of origin

